



WHAT IS FASTCHECK?

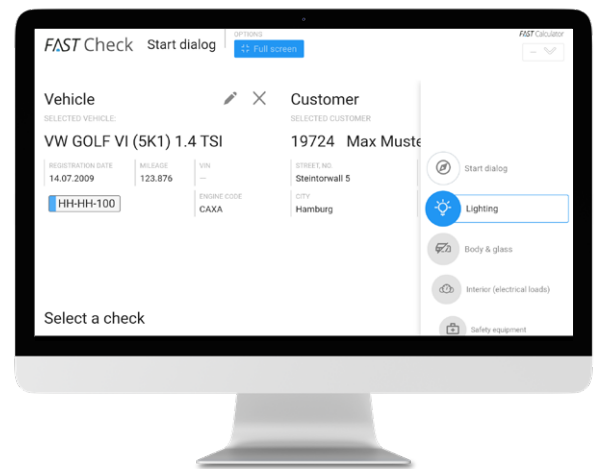
The **Fast Check** is a module within the **TOPMOTIVE catalog**. It supports the documentation within the scope of a vehicle acceptance in the workshop or facilitates a fixed procedure of a vehicle inspection on the part of an official service provider. **Fast Check** enables the documentation of existing damage prior to repair as well as a direct calculation of the damage parts incl. expenditure time. The function is designed for practical and fast use on a tablet device. **FastCheck** can also be used independently of the **TOPMOTIVE catalog** as a „standalone“ solution.

WHAT FUNCTIONS DOES FASTCHECK PROVIDE?

- + Inspection and documentation by taking photographs of existing damage or defects on a vehicle
- + Support in the acceptance process through defined inspection points
- + Interfaces to other systems possible:
 - + Direct calculation of the necessary parts and labor times during the recording of the defects
 - + Transfer of the required parts and times into a cost estimate
 - + Overview in form of a PDF incl. inspections, defects as well as photos for better understanding
- + Display in full screen function on the tablet - for a better overview of all functions

WHAT BENEFITS DOES FASTCHECK PROVIDE?

- + More efficient, more digital and therefore more sustainable processes within the workshop (chain) and towards the cardriver
- + Illustrated documentation for better presentation, less need for explanation and increased transparency for the cardriver
- + Less need for discussion and fewer goodwill repairs



CONTACT In case of further questions, feel free to contact our team:

DVSE Gesellschaft für Datenverarbeitung, Service und Entwicklung mbH

Lise-Meitner-Straße 4 • 22941 Bargtheide • Tel.: +49 (0) 4532 9740 01 • sales@topmotive.eu • www.topmotive.eu